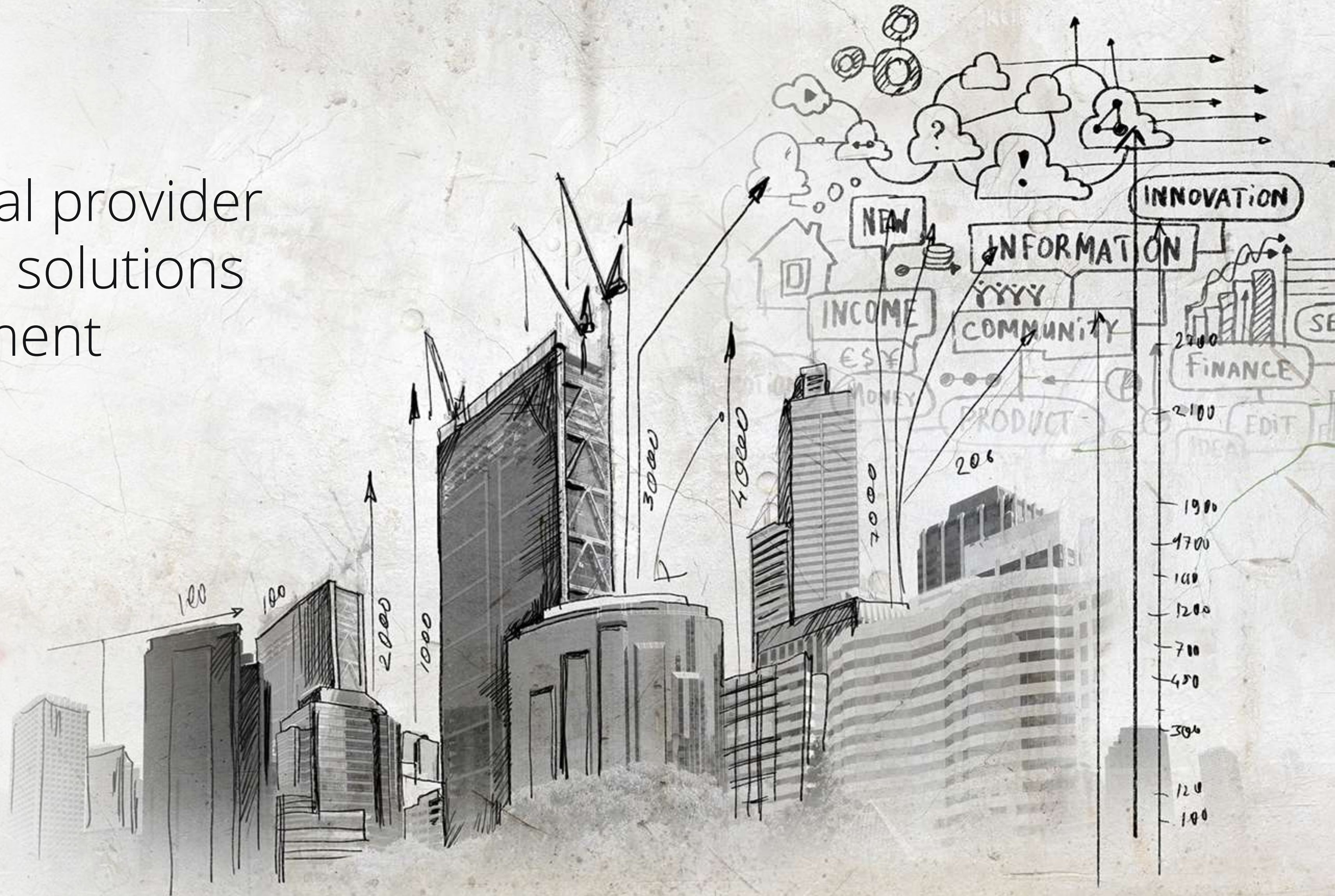


The most dynamic local provider
of integrated software solutions
for business management



senior
SOFTWARE



We translate technological innovation
into direct benefits for companies



Daniel Toma / General Manager Senior Software

"We are one of the most dynamic local providers of integrated software solutions for business management. The professionalism and expertise of our team is reflected in the quality of services and contributes to the success of implementation projects. The solutions we offer form a safe platform to support key business decisions: analysis, decision, control and optimization."

AGENDA

- About us
- Solutions
- About MES
- MES Benefits
- Structure
- Customers
- Contact



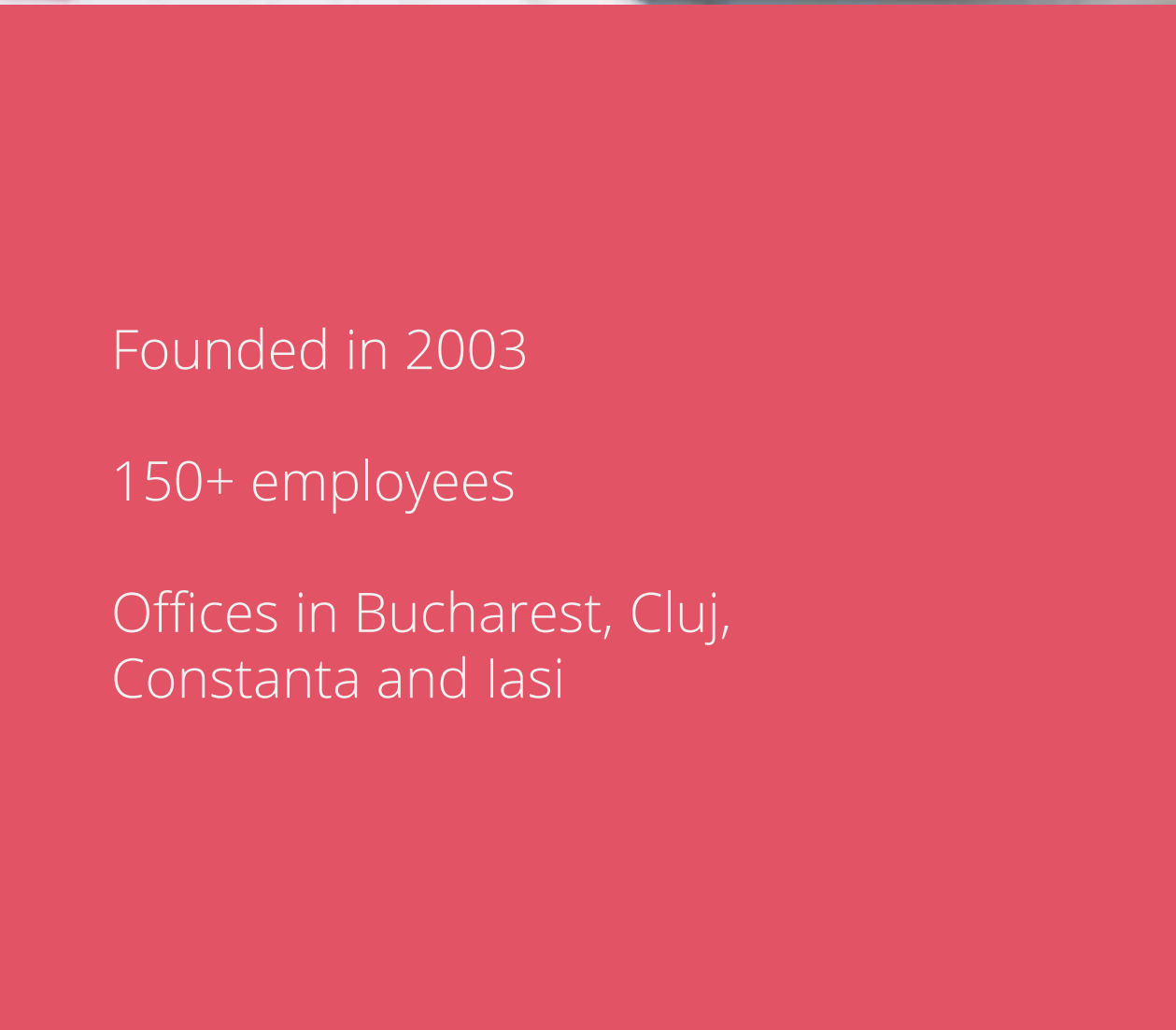
Over 400 implementation projects in:

- Romania
- Bulgaria
- Italy
- Hungary
- UK



Specialized software instruments for:

- Import and export
- Distribution
- Manufacturing
- Retail
- Services



Founded in 2003

150+ employees

Offices in Bucharest, Cluj,
Constanta and Iasi



Latest available technologies

Pioneers in the SaaS area

Flexible licensing policies





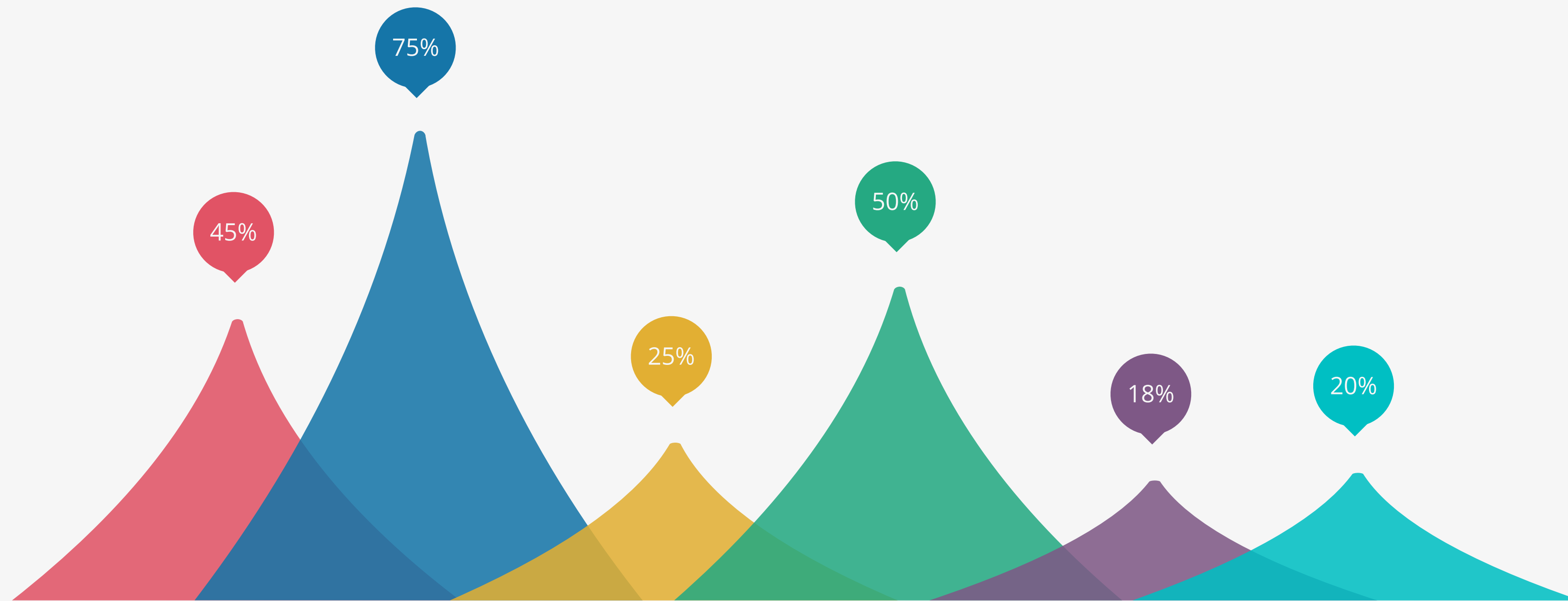
MES allows the management, control and optimization of all activities involved in the production process, from order launch to finished product.

It covers 4 key areas:



What are the benefits of MES?

Manufacturers who choose to control and optimize their production processes with MES, recovered their investment within 3 to 6 months of implementing the solution and gained:



45% decrease in manufacturing cycle time

75% decrease in data entry time

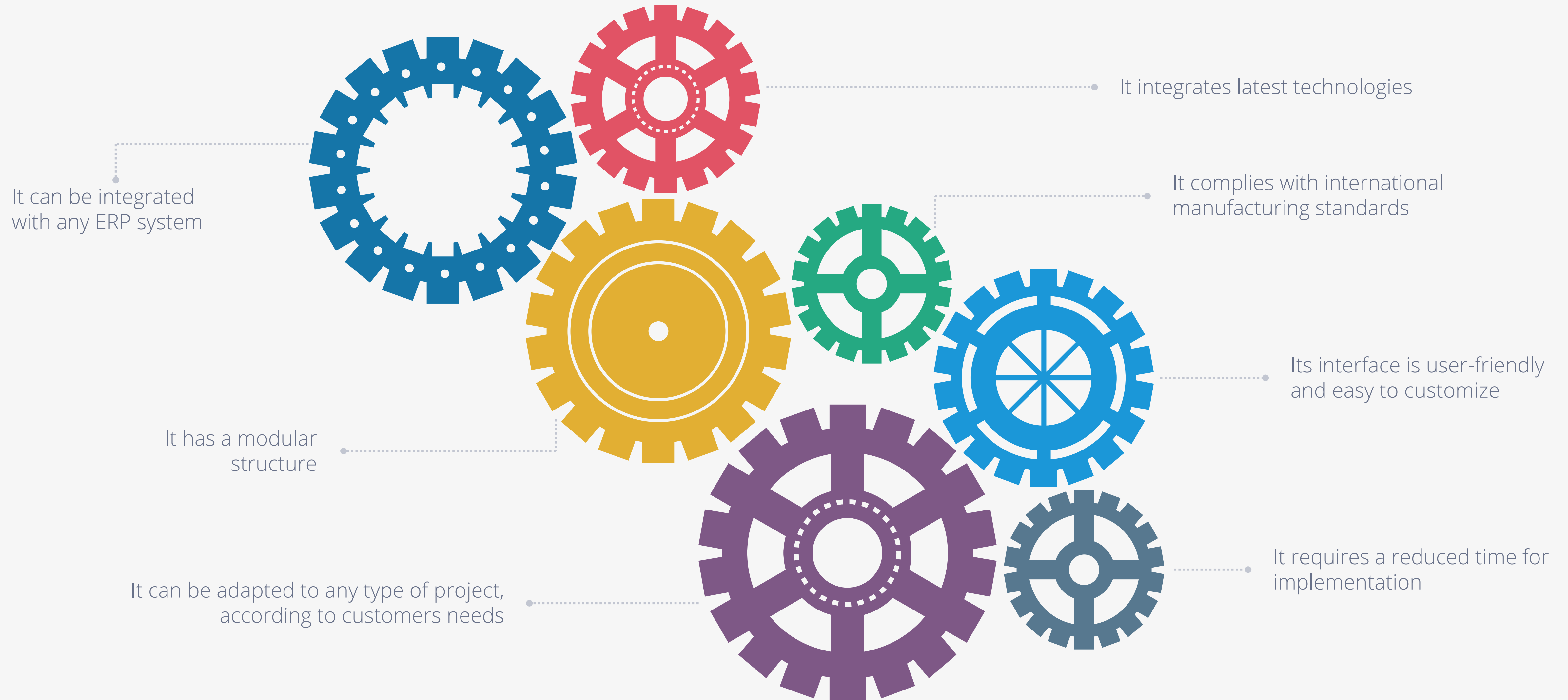
25% reduction of the Work in Progress (WIP)

50% reduction of paperwork between shifts

18% decrease in scraps

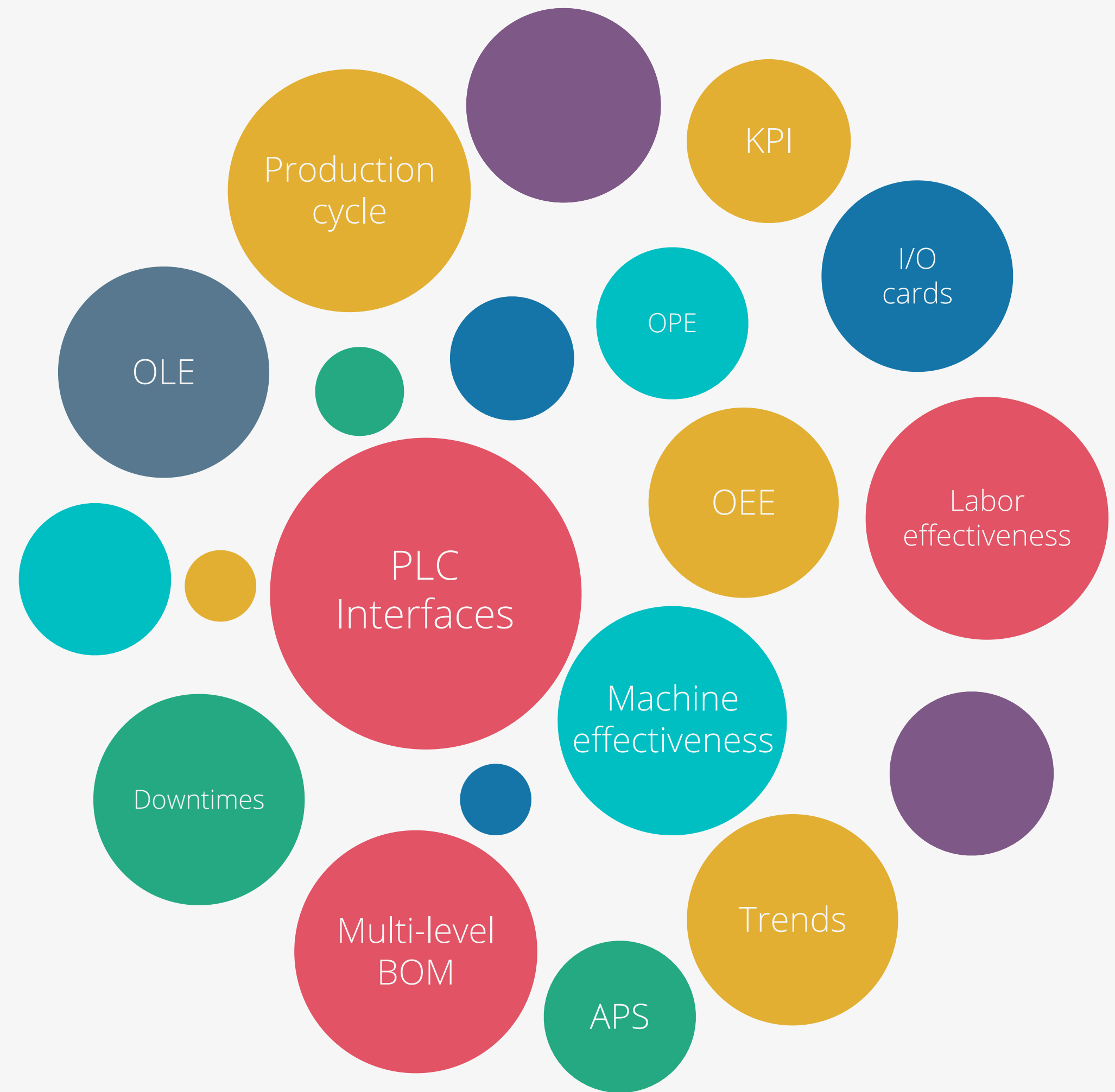
20% productivity increase

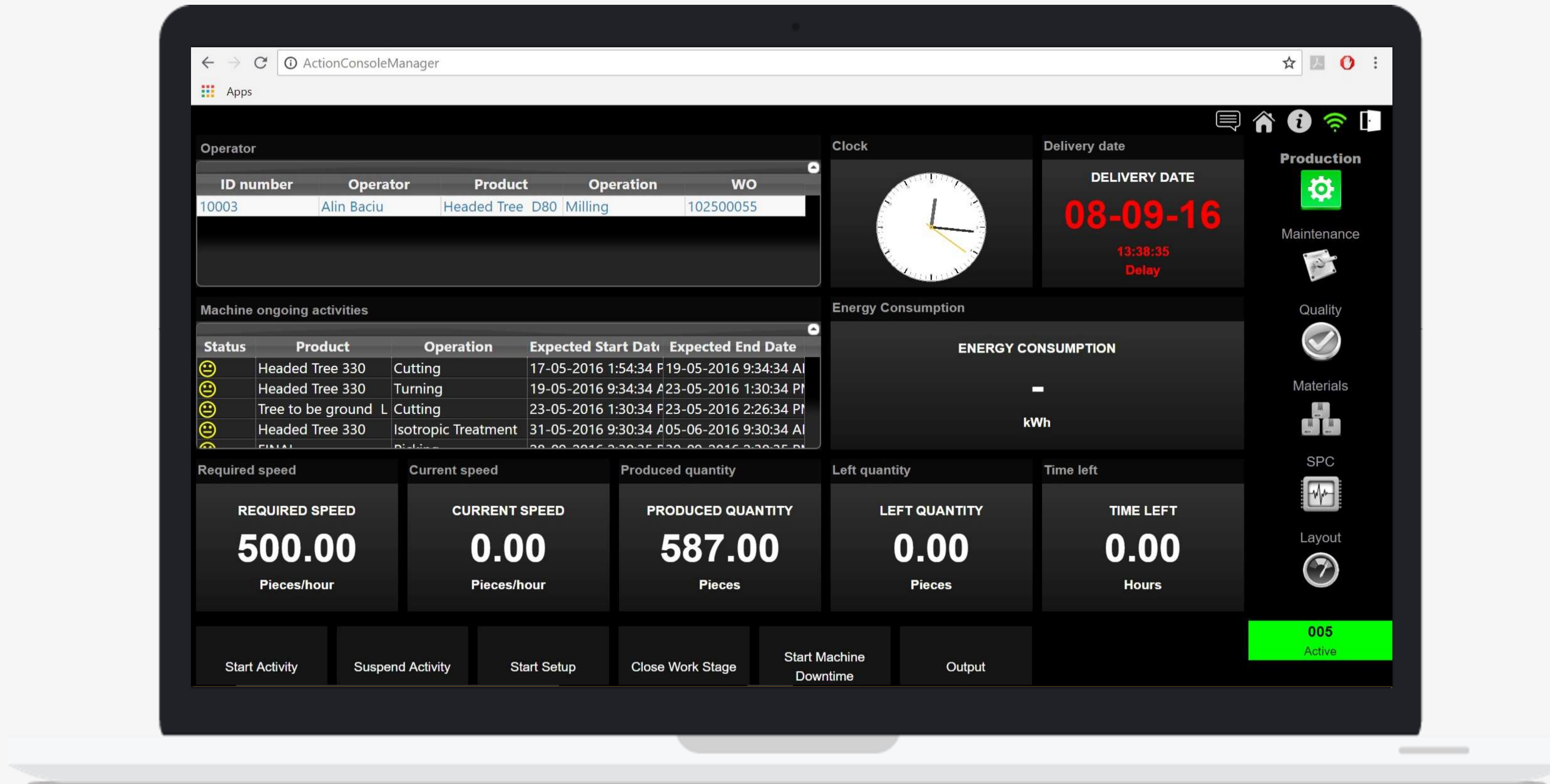
Why choose MES from Senior Software?



The MES Production area includes all functionalities required for plant management and monitoring, providing users accurate, real-time information on the production progress, through the data collection workstations implemented in the factory floor.

- Data Acquisition & Production Monitoring
- Planning and Scheduling
- Machine Data Acquisition
- Order Management
- KPI – Performance Analysis
- Time & Attendance

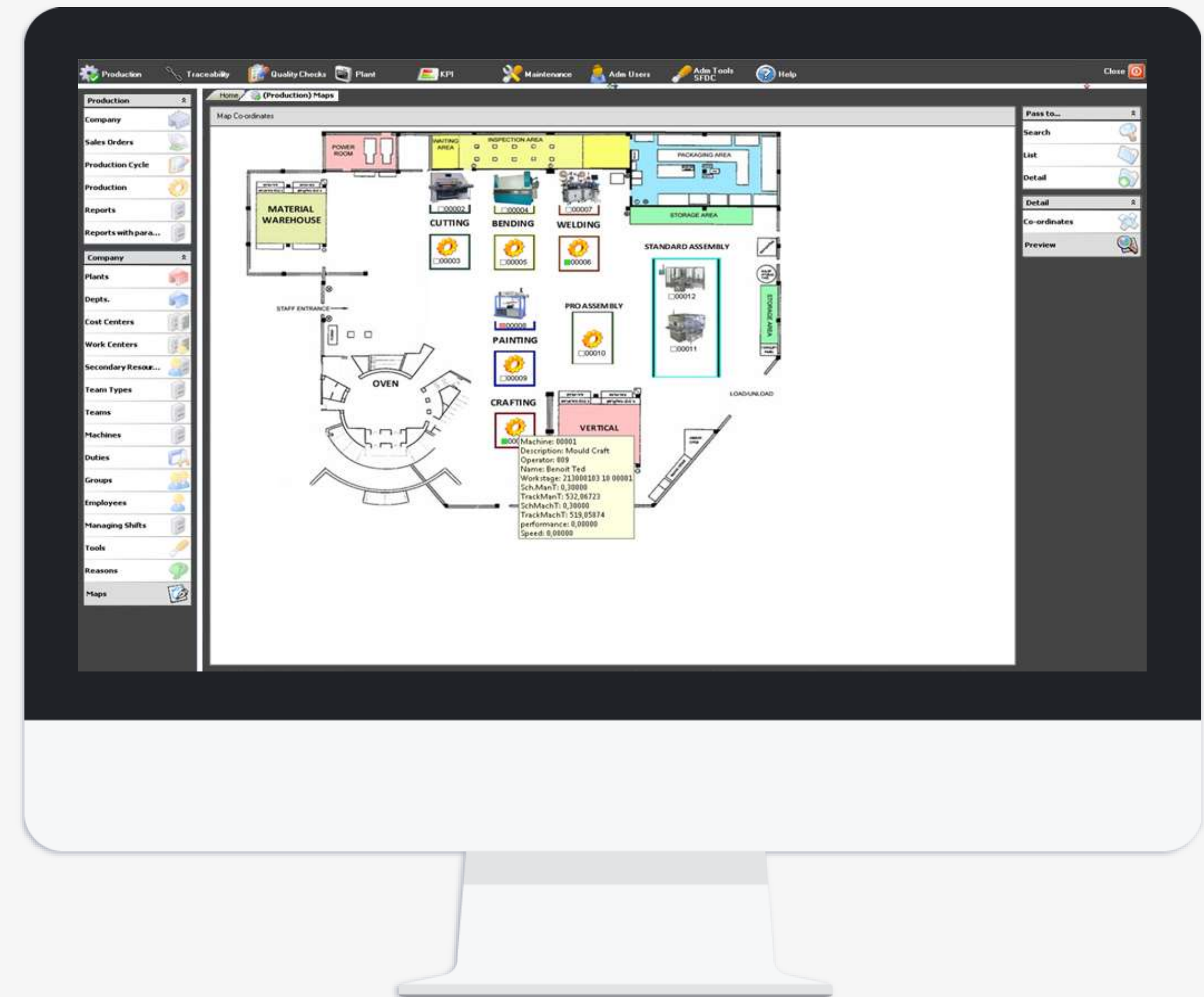




Main Dashboard

The MES Material Management Module allows users to manage warehouses, locations and materials used during production processes (raw material, semi-finished products, finished products). The Material Management Module can automatically track – through wireless portable terminals – the movement of materials, from their arrival to product shipment.

- Automatic material identification
- Managing material inflows/outflows
- Managing material movements
- Real-time monitoring of locations and stock



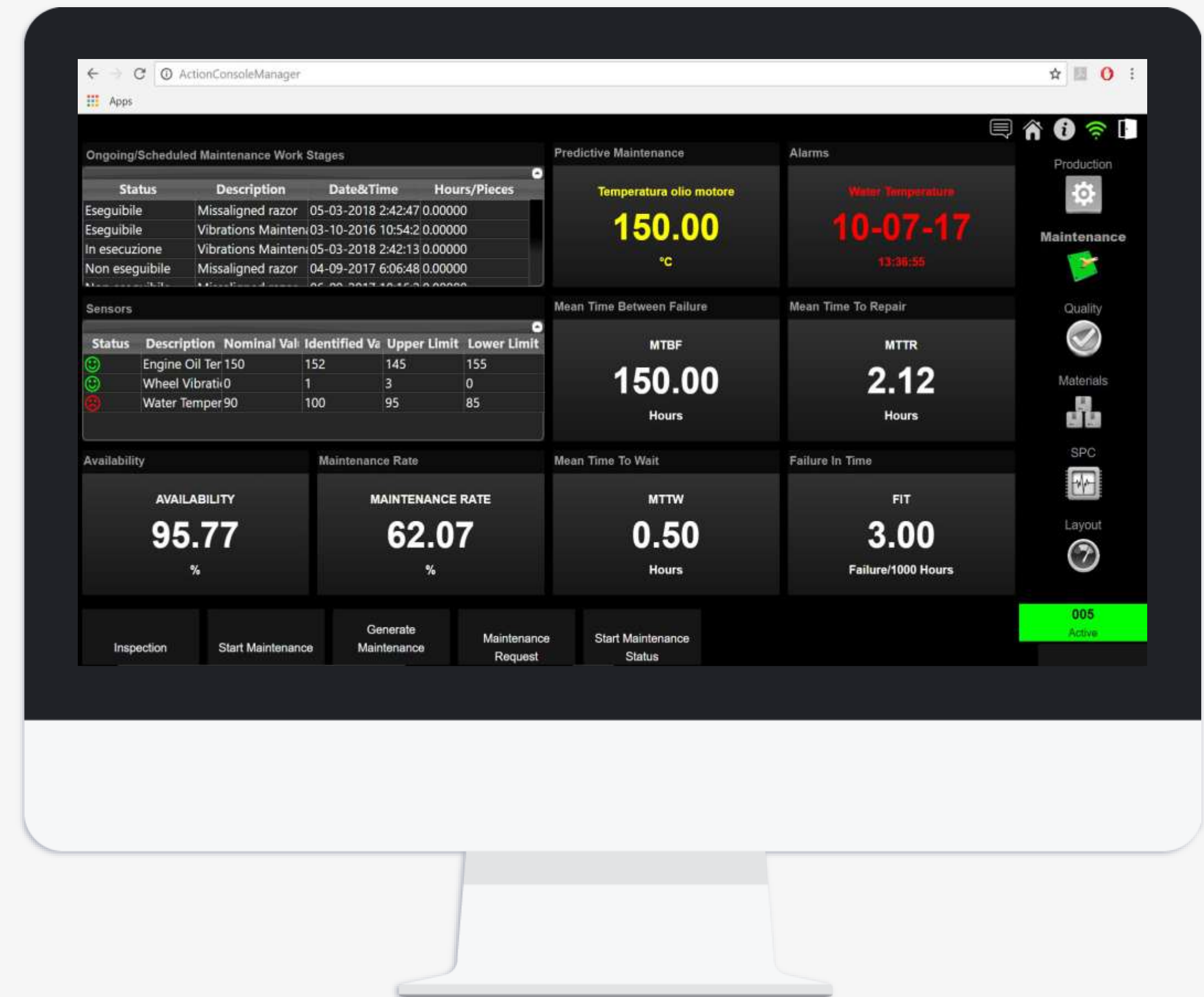
Find out how MES helps you manage, control and optimize all activities and resources in the production process



Ask for a free demonstration!

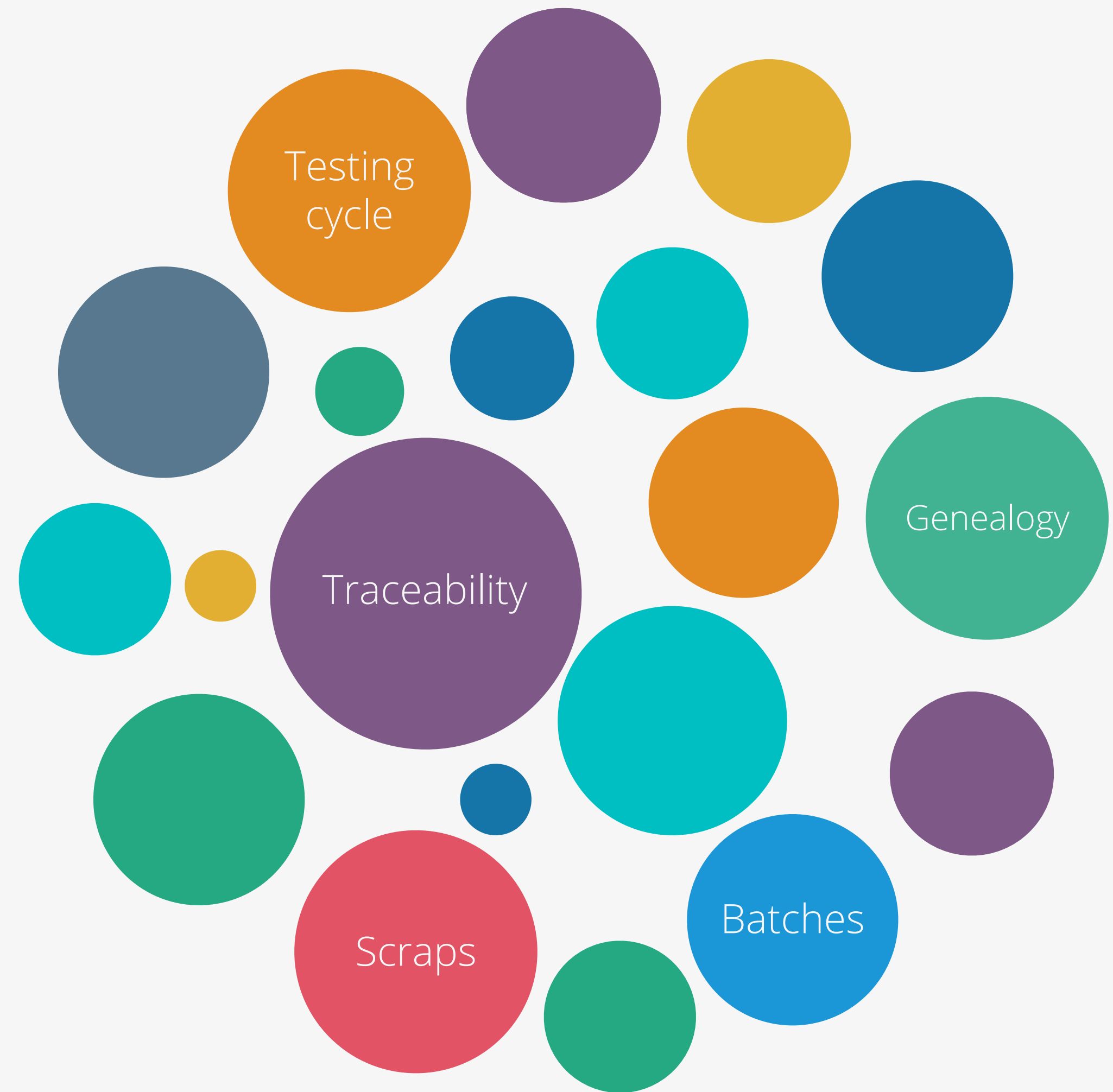
The Maintenance Module allows users to manage and control all maintenance activities carried out by operators for machines / tools / equipment. Its functionalities include both Breakdown and Preventive Maintenance activities.

- Managing Assets that require Maintenance
- Managing the Maintenance Calendar
- Managing Breakdown Maintenance Requests
- Managing and Tracking Used Spare Parts
- KPI – Maintenance Performance Analysis

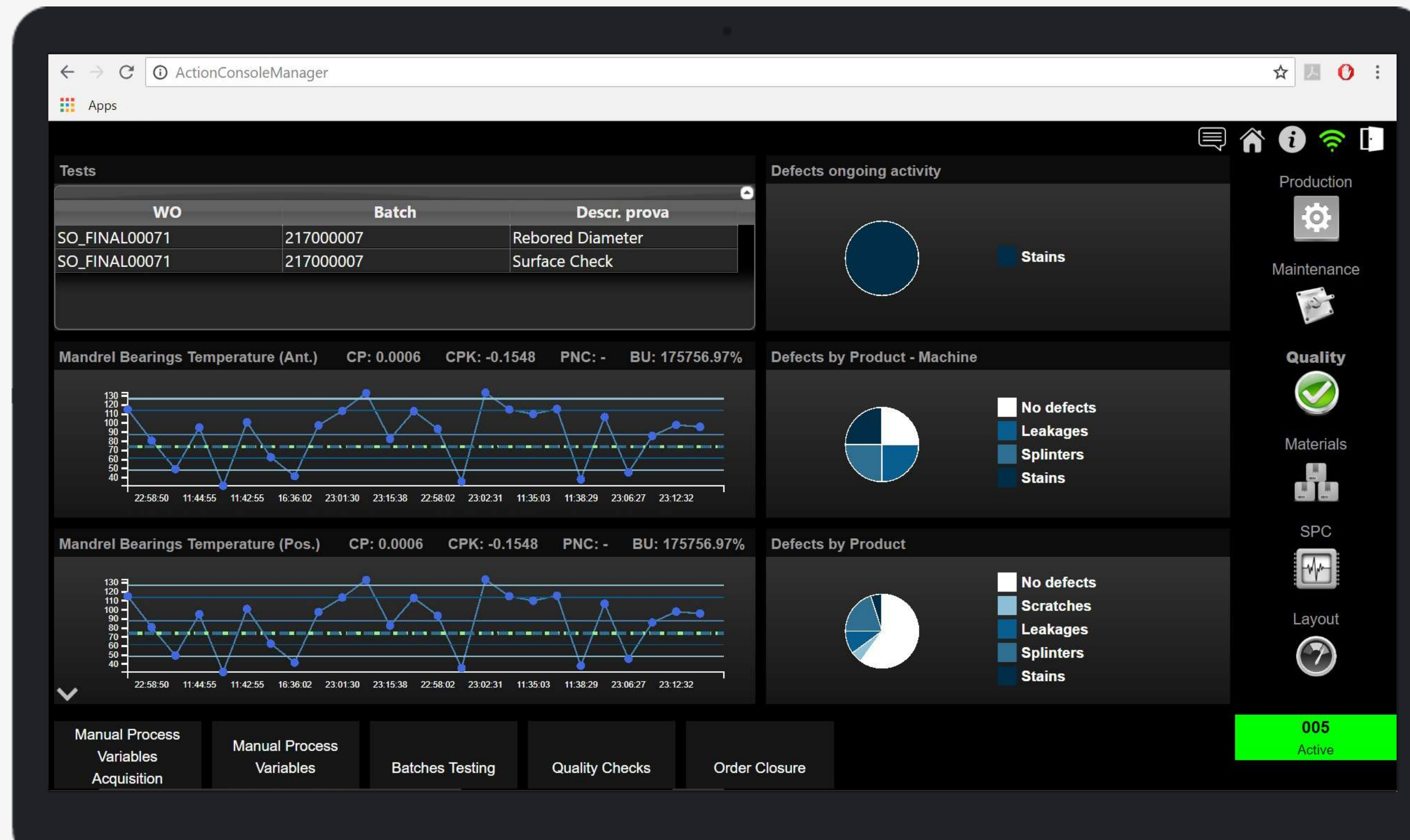


The MES Quality Management Module automatically manages, tracks and monitors quality control parameters detected during manufacturing operations, to ensure product compliance.

- Quality Checks (Tests, Defects, Quality Approval)
- Process Control through interfaces with PLC
- Batch Tracing and Tracking



MES Structure: Quality management



The dashboard displays various quality management metrics and data points:

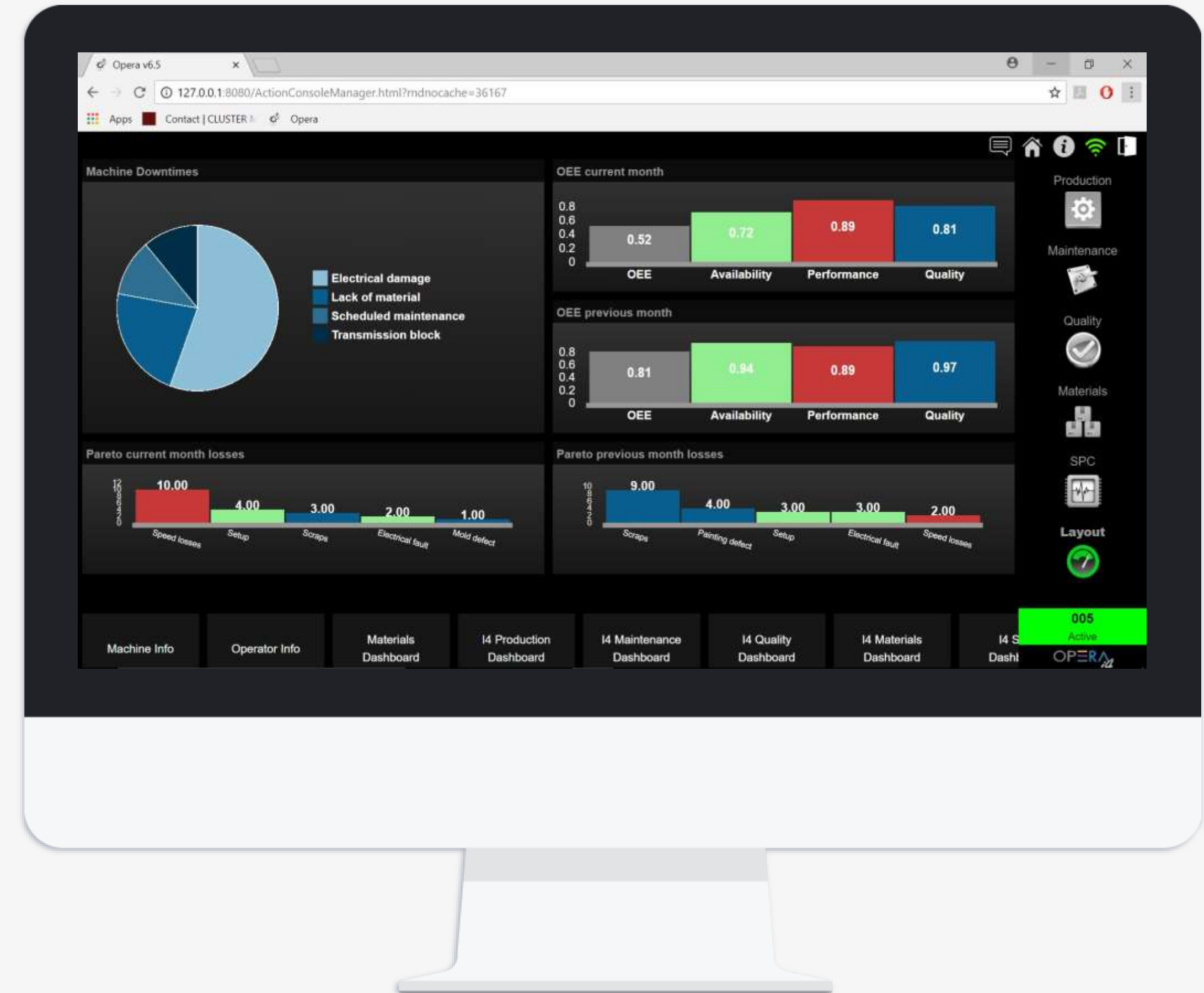
- Tests Table:**

WO	Batch	Descr. prova
SO_FINAL00071	217000007	Rebored Diameter
SO_FINAL00071	217000007	Surface Check
- Mandrel Bearings Temperature (Ant.):** Line chart showing temperature fluctuations over time. CP: 0.0006, CPK: -0.1548, PNC: -, BU: 175756.97%
- Mandrel Bearings Temperature (Pos.):** Line chart showing temperature fluctuations over time. CP: 0.0006, CPK: -0.1548, PNC: -, BU: 175756.97%
- Defects ongoing activity:** Pie chart showing 100% Stains.
- Defects by Product - Machine:** Pie chart showing 100% Stains.
- Defects by Product:** Pie chart showing 100% Stains.
- Navigation Panel (Right):**
 - Production (Gear icon)
 - Maintenance (Wrench icon)
 - Quality (Checkmark icon)
 - Materials (Stack of boxes icon)
 - SPC (Line graph icon)
 - Layout (Target icon)
- Bottom Bar:**
 - Manual Process Variables Acquisition
 - Manual Process Variables
 - Batches Testing
 - Quality Checks
 - Order Closure
 - 005 Active (Green indicator)

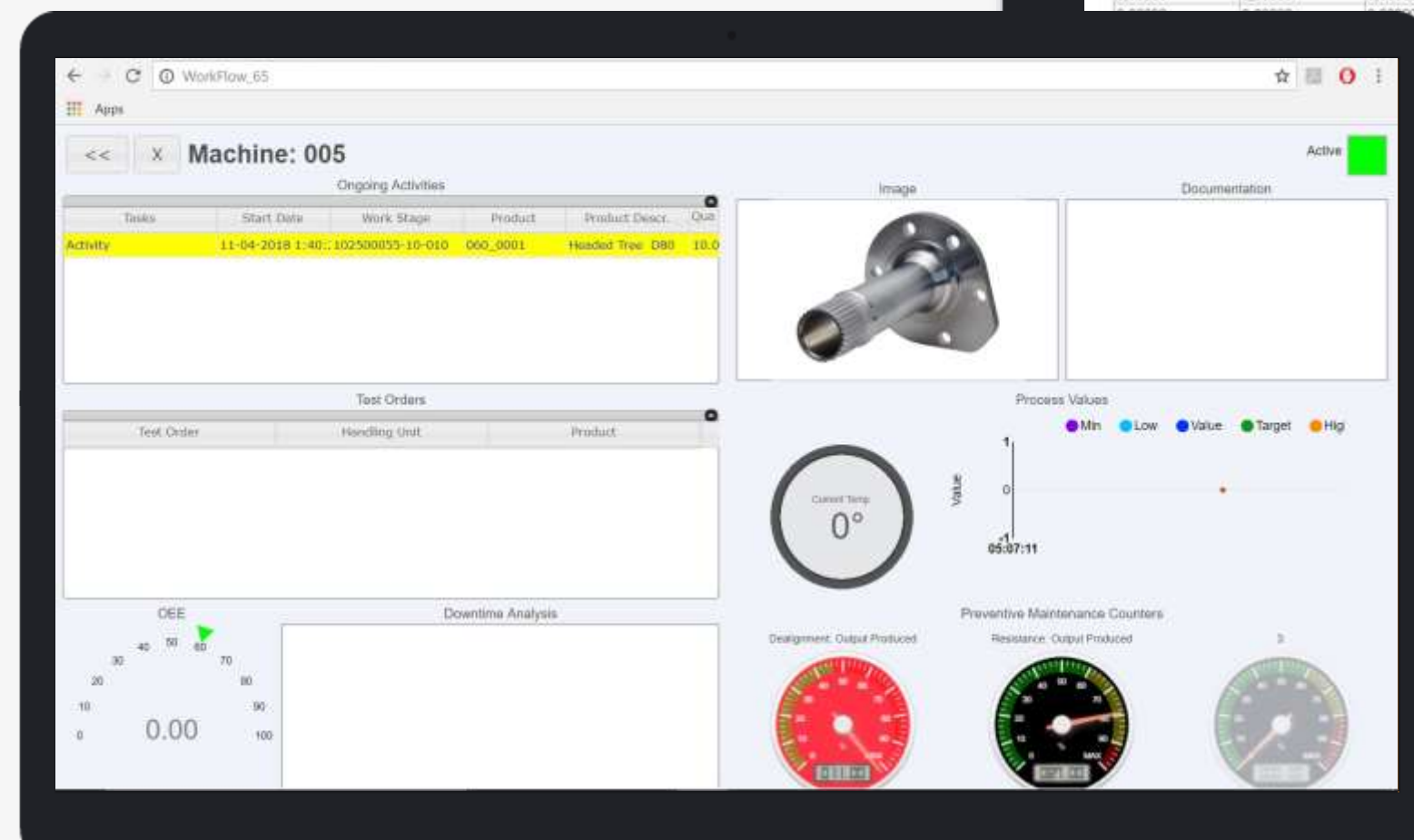
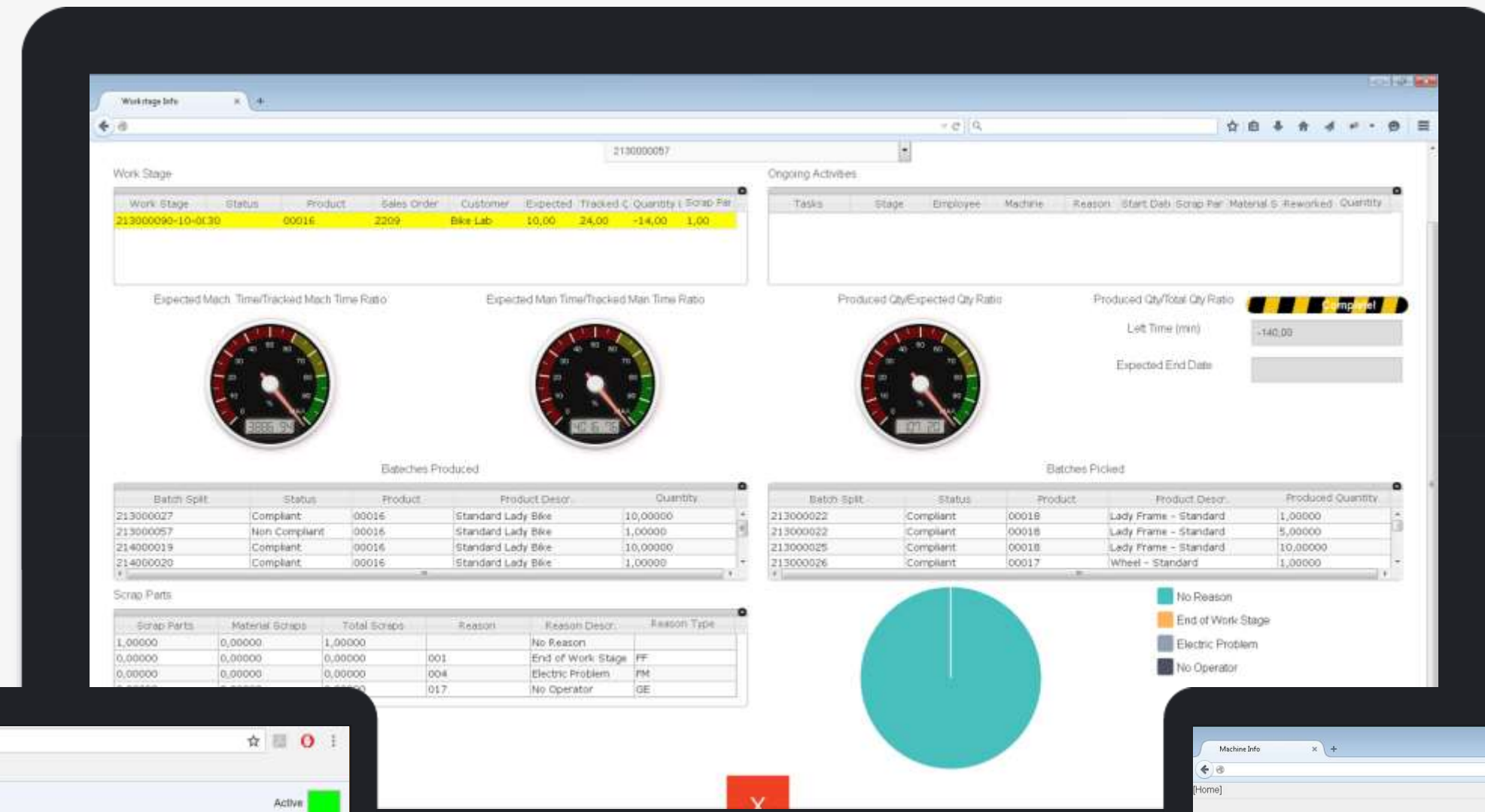
The MES KPI module allows users to calculate key performance indicators that are useful for measuring production performances. This way, managers have the possibility to undertake corrective actions to improve company productivity.

Some production-specific KPI's are:

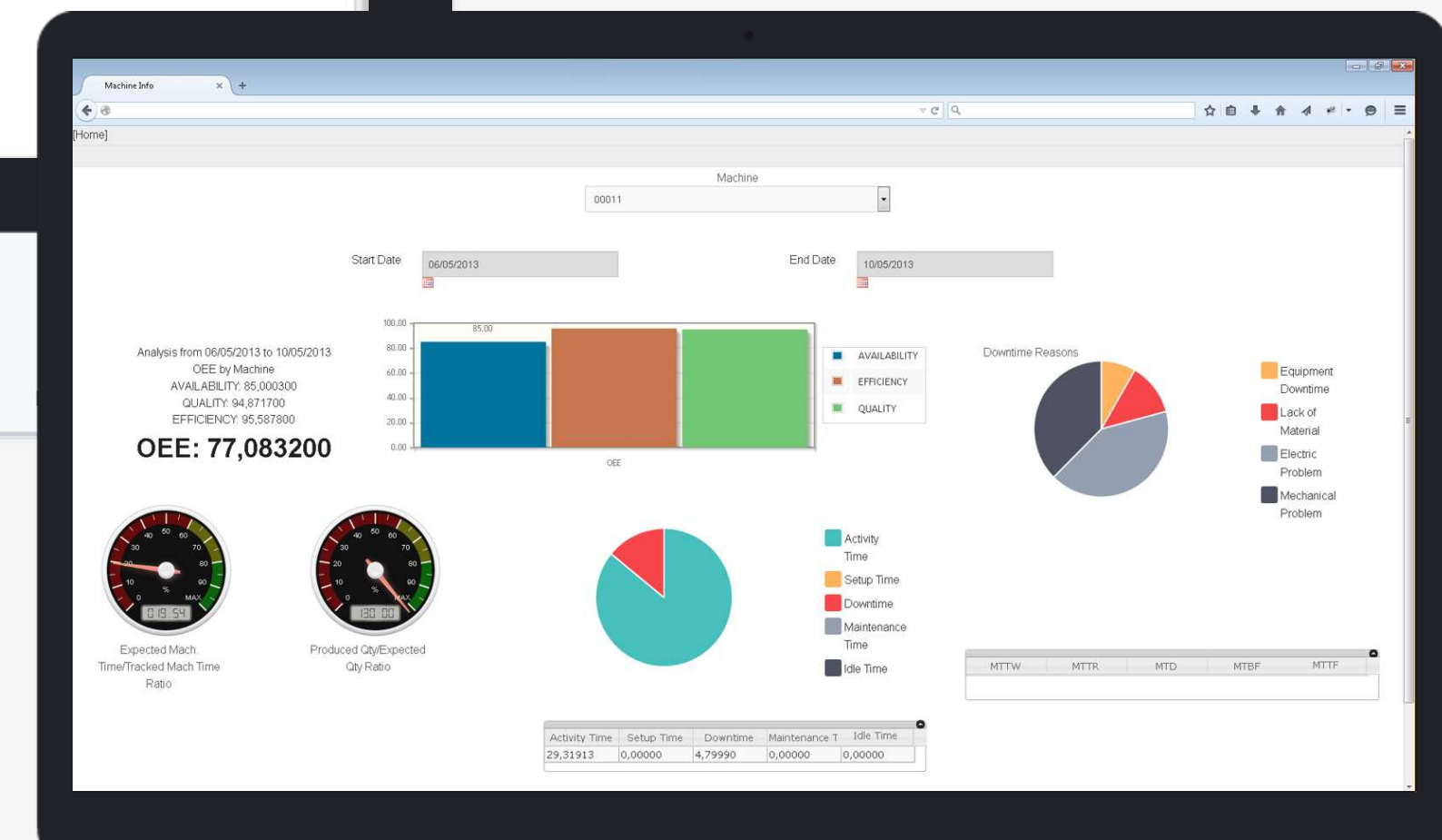
- Achieved versus Planned Production
- OEE – Overall Equipment Effectiveness
- OLE – Overall Labor Effectiveness
- Scrap Rate
- Downtime Analysis
- Quality Performance



Workstage Info Dashboard

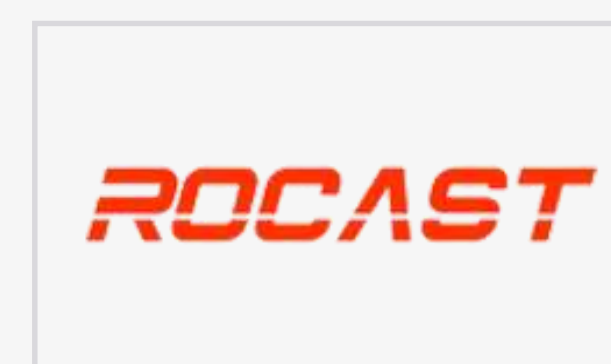
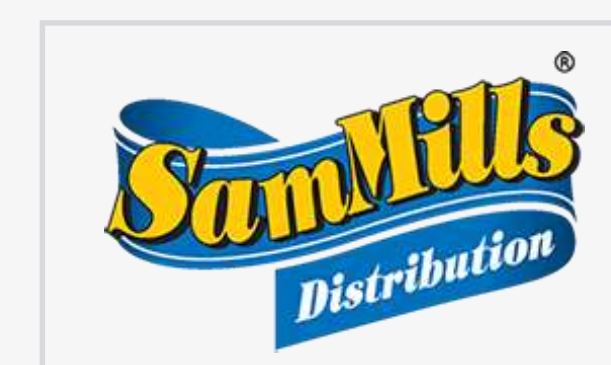
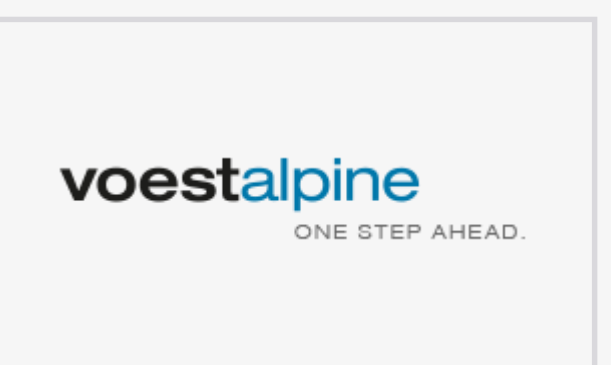
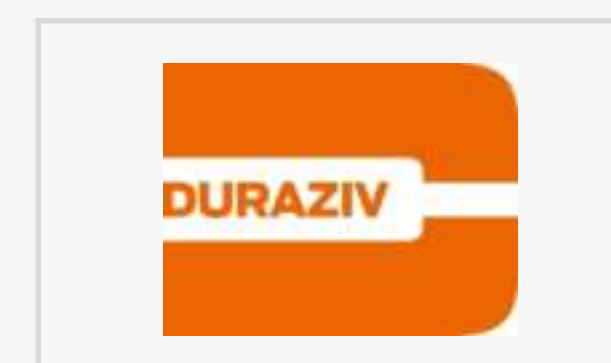
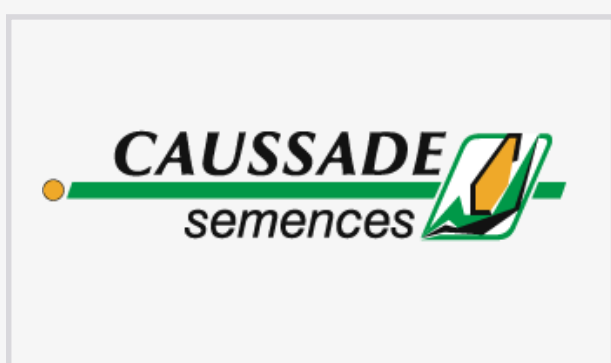
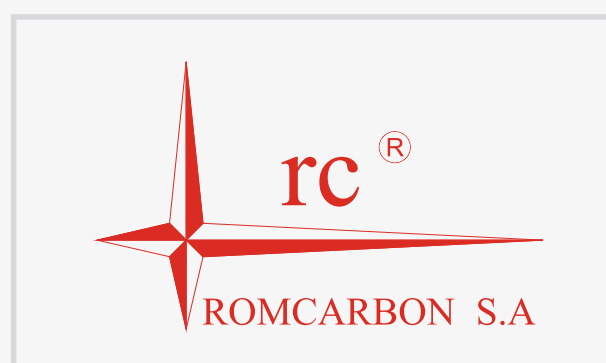


Machinery Status



Activities Dashboard

Customers





Thank you for your time!

If you have any questions or you want additional information you can contact us at:

+40 21 310 74 81

sales@seniorsoftware.ro

www.seniorsoftware.ro

